

# GOVERNANCE & ORGANISATION

---

January 2022

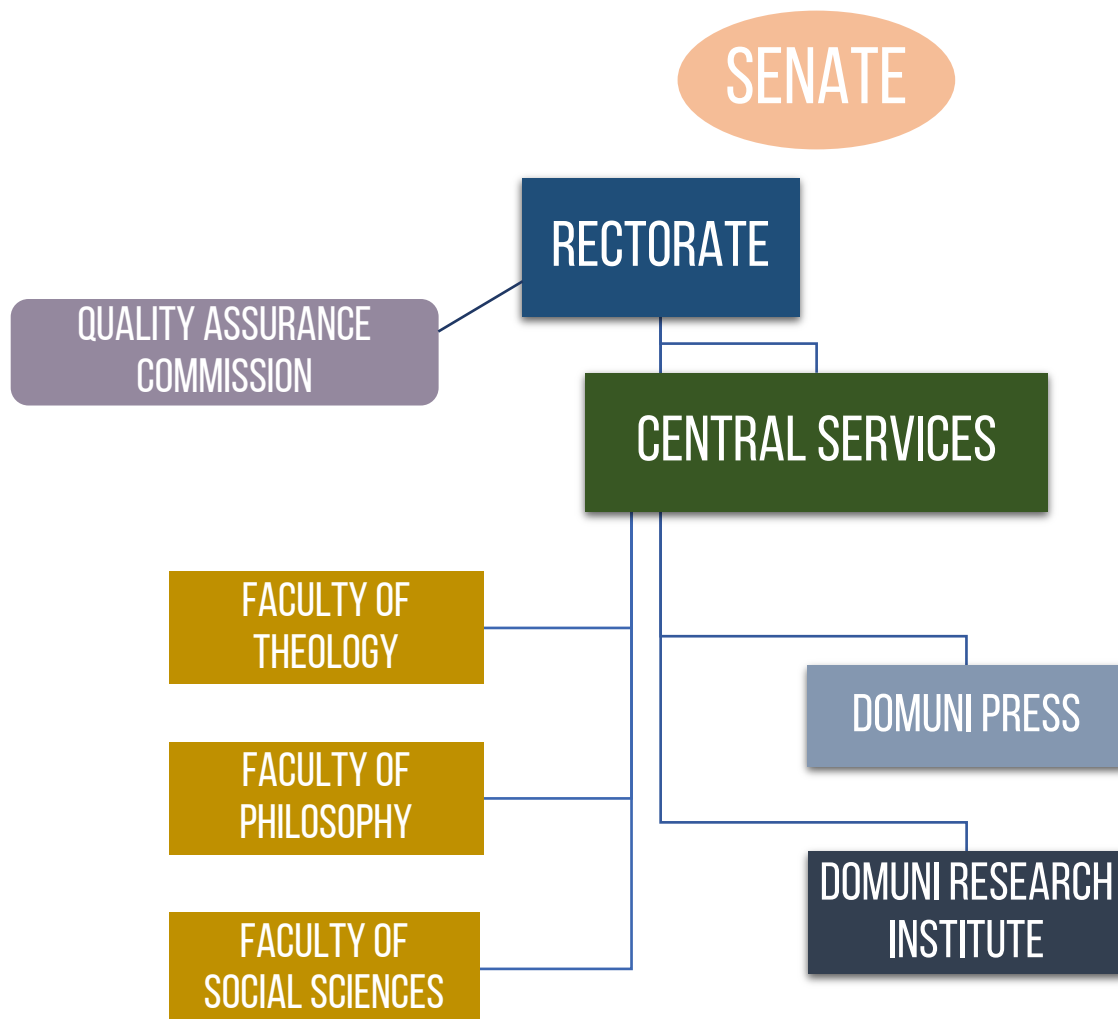
DOMUNI  
UNIVERSITAS



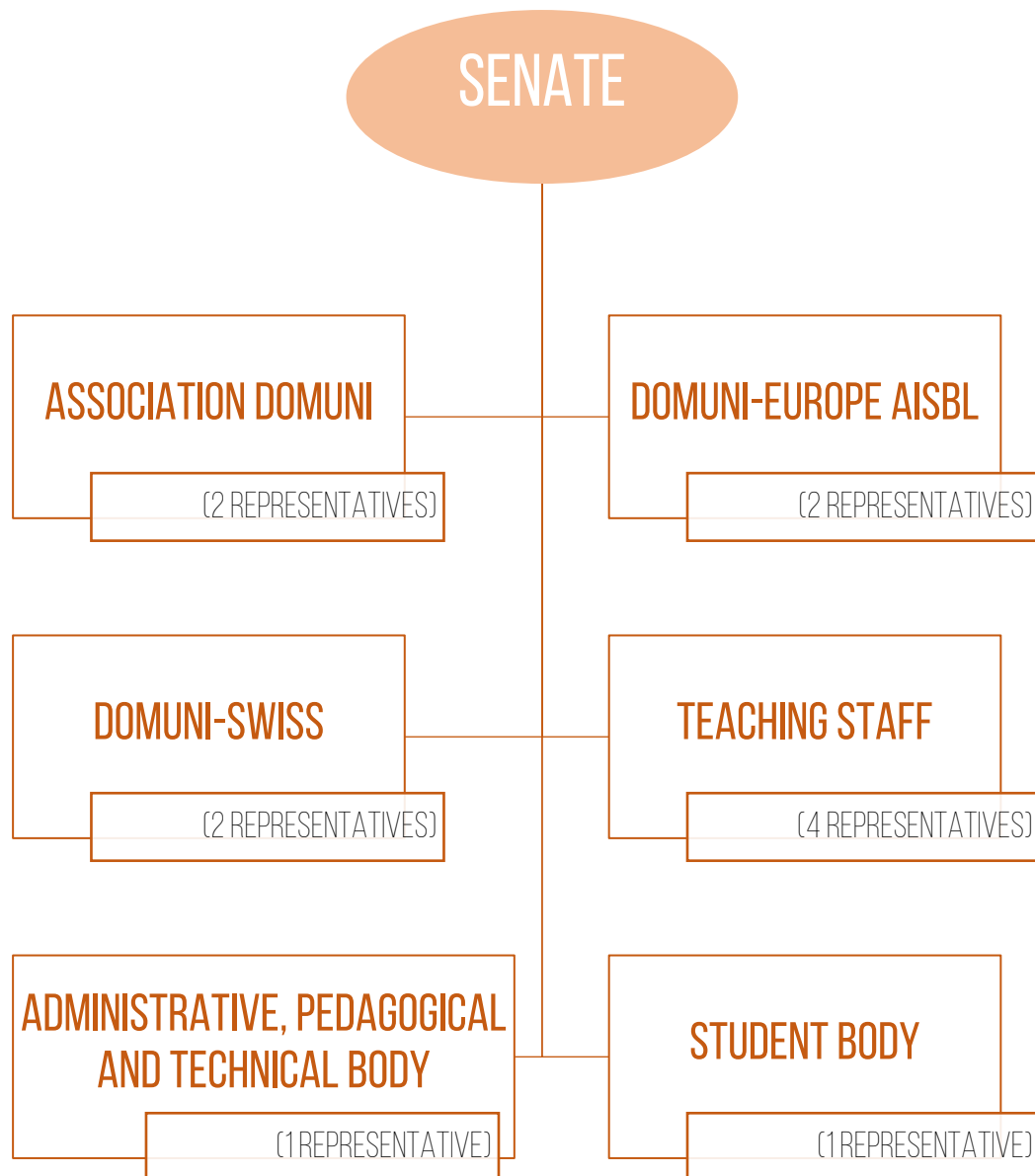
# Table of Contents

General organisation chart .....	3
The Senate .....	4
The Rectorate .....	5
The Central Services .....	6
The Faculties .....	8
The Interfaculty Institutes .....	9
Domuni Research Institute .....	10

# General organisation chart



# The Senate



# The Rectorate

## RECTORATE

**MICHEL VAN AERDE**  
RECTOR

**MARIE MONNET**  
ACADEMIC  
VICE-RECTOR

**AMEER JAJÉ**  
VICE-RECTOR FOR  
INTERNATIONAL RELATIONS

QUALITY ASSURANCE COMMISSION

## GENERAL SECRETARIAT

**CLÉMENTINE FRANCHI**  
GENERAL SECRETARY

**RAWAD AL FEGHALI**  
RECTOR'S ASSISTANT

# The Central Services

Administrative, pedagogical and technical body

## RECTOR

### BOARD OF DIRECTORS

#### ADMINISTRATIVE DEPARTMENT

ACADEMIC ADMINISTRATION

ADMISSIONS

ACCOUNTING

SAFETY/QUALITY

#### PEDAGOGICAL DEPARTMENT

PLANNING/  
PEDAGOGICAL COORDINATION

TUTORING/MENTORING

PEDAGOGICAL COMMISSIONS

MOODLE

#### IT/COMMUNICATION DEPARTMENT

PROGRAMMING/  
DEVELOPMENT

WEBDESIGN

PUBLISHING

COMMUNICATION

### BOARD OF DIRECTORS

**MICHEL VAN AERDE**  
RECTOR

**MARIE MONNET**  
ACADEMIC VICE-RECTOR

**AMEER JAJÉ**  
VICE-RECTOR FOR  
INTERNATIONAL RELATIONS

**CLÉMENTINE FRANCHI**  
GENERAL SECRETARY

**CÉCILE BOUCHERLE**  
ADMINISTRATIVE  
DIRECTOR

**STEPHANIE ATTERBURY**  
ADMINISTRATIVE DIRECTOR  
ASSISTANT

**CARLY WOOD**  
PEDAGOGICAL DIRECTOR

**INA KASNIJA**  
IT/COMMUNICATION DIRECTOR

## ADMINISTRATIVE DEPARTMENT

**CÉCILE BOUCHERLE**

ADMINISTRATIVE DIRECTOR

**STEPHANIE ATTERBURY**

ADMINISTRATIVE DIRECTOR  
ASSISTANT

**MARIE-JOSÉ SARKIS**

ASSISTANT

**ELISE SAAD**

DOMUNI-ARABIC

**JUAN CARLOS QUIRÒS GONZÁLEZ**

DOMUNI-SPAIN

## PEDAGOGICAL DEPARTMENT

**CARLY WOOD**

PEDAGOGICAL DIRECTOR

**AMEER JAJÉ**

DIRECTOR OF DOMUNI-ARABIC

**AUGUSTIN WILIWOLI**

AFRICA DEPARTMENT DIRECTOR

**EVELYNE MAURICE**

MENTOR

**APOLLINAIRE KIVYAMUNDA**

MENTOR

**EMMANUEL BOISSIEU**

MENTOR

**ADRIAN JUDD**

MENTOR

## IT/COMMUNICATION DEPARTMENT

**INA KASNIJA**

IT/COMMUNICATION DIRECTOR

**CATERINA ERANDO**

EDITION & DESIGN

**ALICE AUXENFANTS**

ASSISTANT

**ALAN RIVES FIGUERAS**

PROGRAMMING ENGINEER

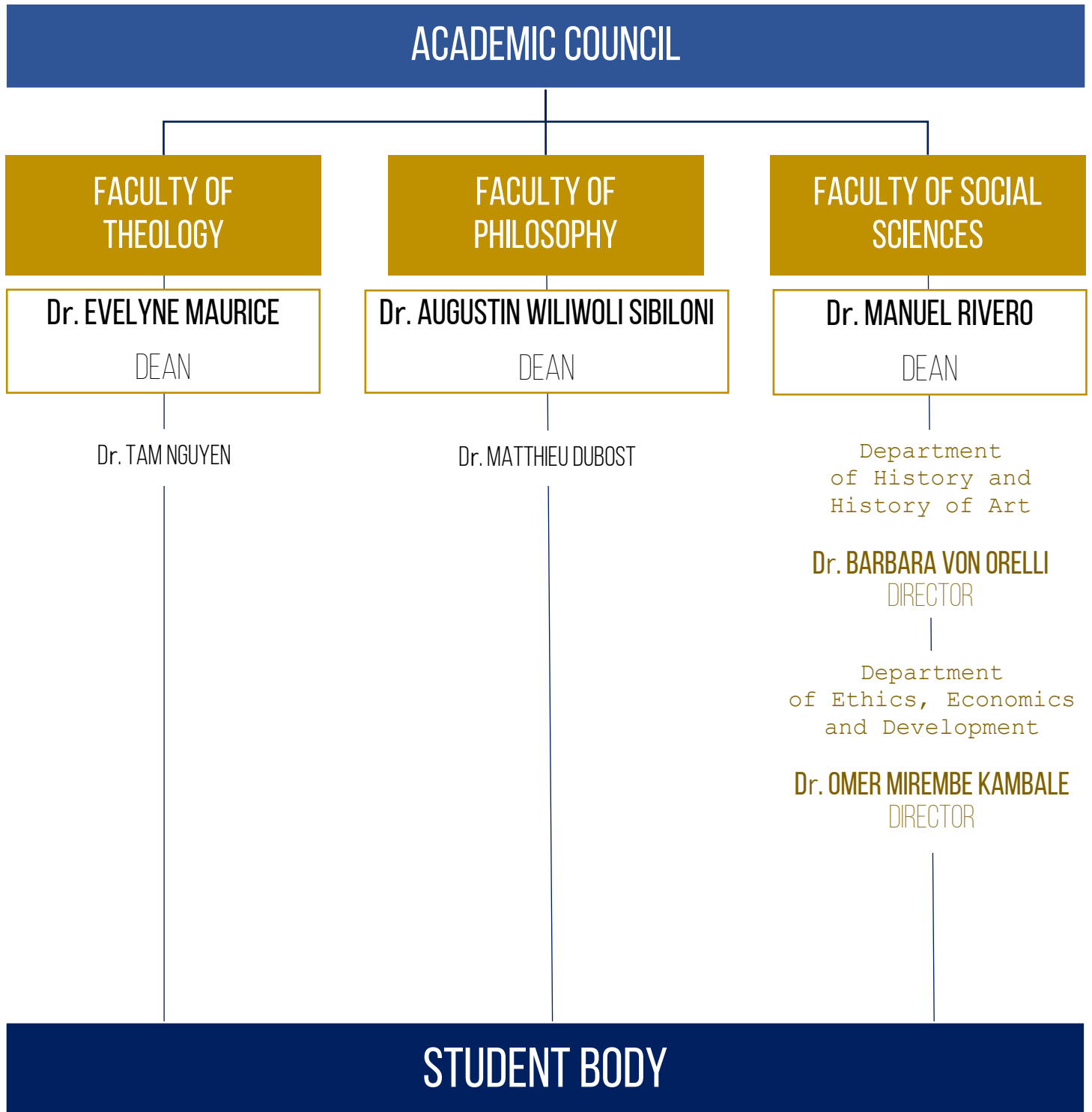
**DAVID MURRILLO**

PROGRAMMING

**JOSE ALBERTO DE BLAS**

WEBDESIGN

# The Faculties





# The Interfaculty Institutes

## INSTITUTES

```
graph TD; A[INSTITUTES] --> B[Human Rights Institute]; A --> C[Institute of Religious Studies]; B --> D["Dr. MARIE MONNET<br/>DIRECTOR"]; C --> E["Dr. AMEER JAJÉ<br/>DIRECTOR"]
```

Human Rights Institute

**Dr. MARIE MONNET**  
DIRECTOR

Institute of Religious Studies

**Dr. AMEER JAJÉ**  
DIRECTOR

# Domuni Research Institute

